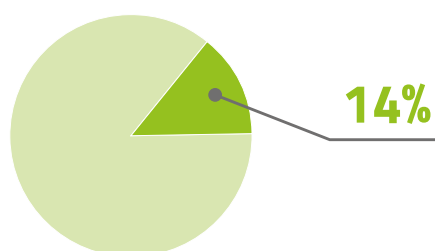


# BRAZIL: AGRO-ENVIRONMENTAL POTENCY CHALLENGES OF THE PLANET AND MANKIND

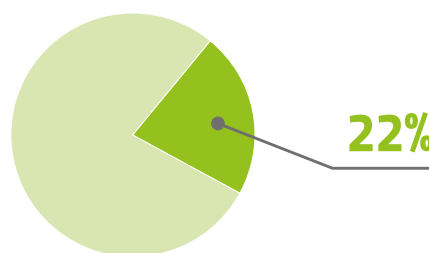


## FOOD SECURITY AND SOCIOECONOMIC DEVELOPMENT

Share of Brazilian's Beef on world's beef consumption



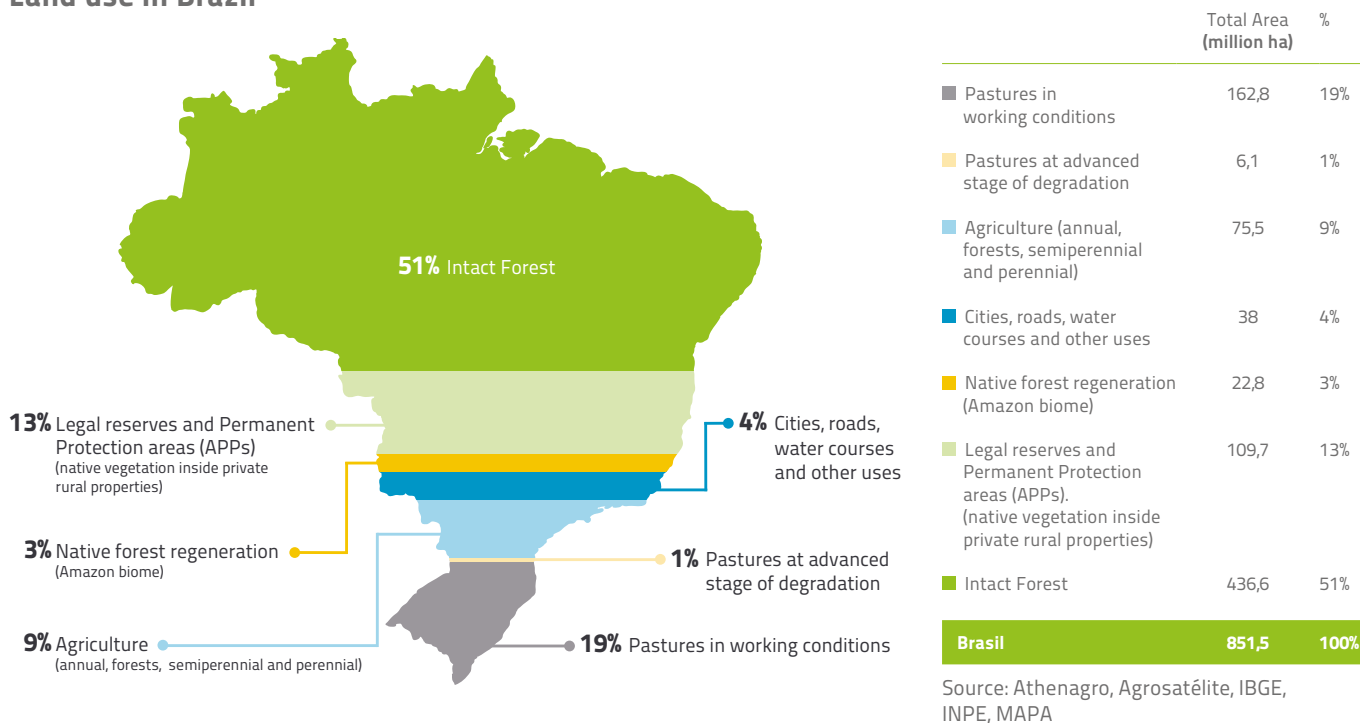
Share of Agribusiness on Brazilian's GDP



Source: Cepea ESALQ/USP

## ENVIRONMENTAL CONSERVATION

Land use in Brazil



### IN ORDER TO KEEP IT POSSIBLE

GTPS and all its members are committed to the **sustainable livestock development** through value chain articulation, **dissemination of information** and support for **continuous improvement**, seeking a balance between the economic, social and environmental pillars.

WHAT TO DO?

**GIPS Platform - access to Guide of Indicators for Sustainable Livestock**



The Guide of Indicators for Sustainable Livestock is an online tool for self-assessment and voluntary use, designed to show what the livestock value chain understands as sustainable production so that they can diagnose their real situation and have references on how they can improve.



**GTPS produced an animated video series to facilitate the comprehension of the technical content**

Follow us on Youtube: @GTPS Pecuária Sustentável

**Guide of Indicators for Sustainable Livestock**

5 PRINCIPLES

- Management
- Communities
- Workers
- Environment
- Value Chain

32 CRITERIA

70 INDICATORS



APPLICABLE TO ALL CATEGORIES OF LIVESTOCK VALUE CHAIN

PRODUCTIVE SECTOR

INDUSTRY

INPUTS AND SERVICES

FINANCIAL INSTITUTIONS

CIVIL SOCIETY

RETAIL AND RESTAURANT

HOW TO DO?



While the GIPS guides the value chain on WHAT needs to be done, the **Manual of Practices for Sustainable Livestock** is focused on assisting farmers on HOW to apply the processes in their production systems. The material classifies different technologies in terms of cost, payback period, productivity, time of implementation and complexity.



Scan the QR Code to access the Manual of Practices for Sustainable Livestock: <http://gtps.org.br/manual/>

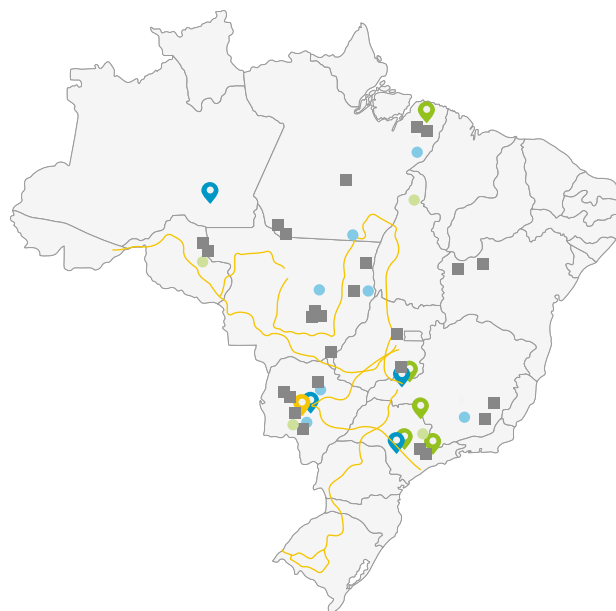
**Multipliers training**

Professionals from companies and institutions associated with GTPS

Extensionists

Students from Universities and Technical Schools

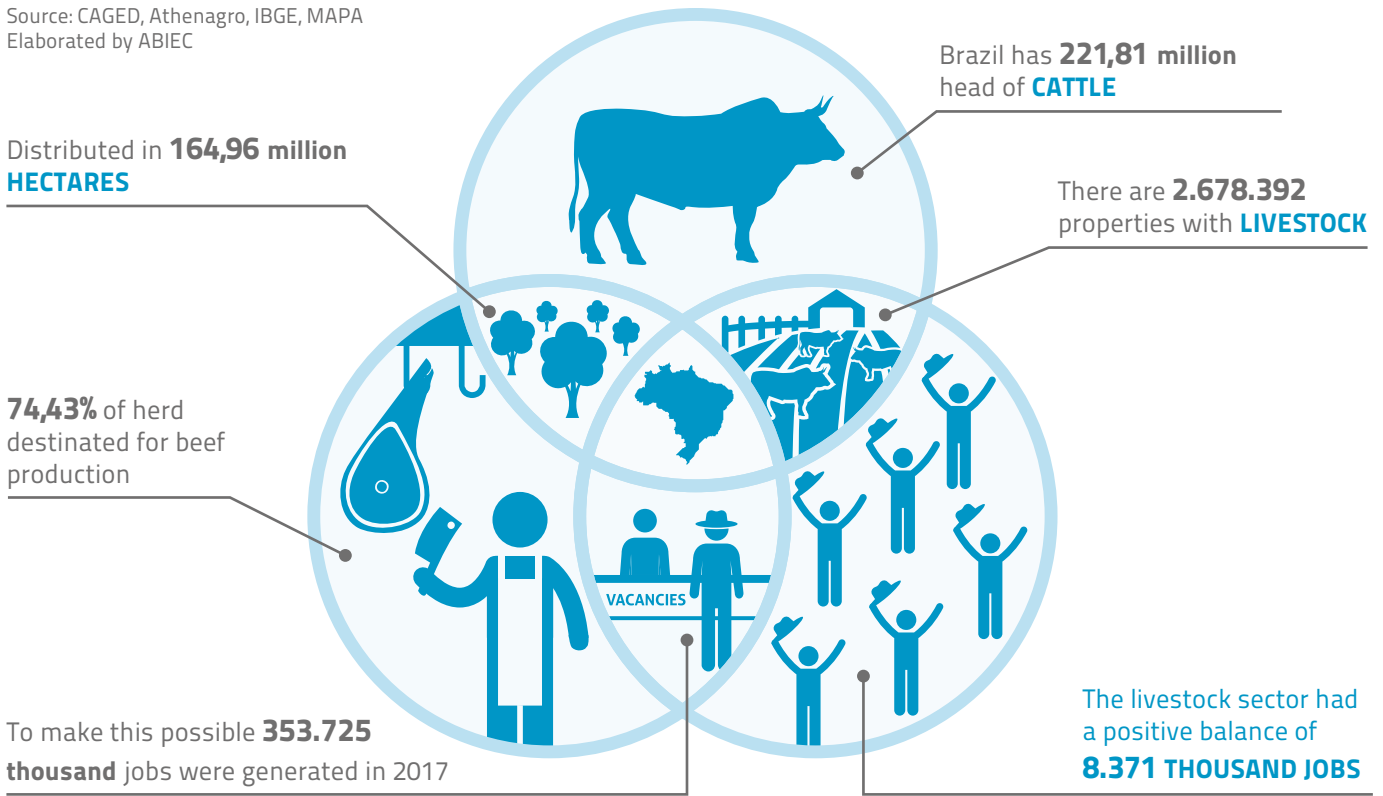
VALUE WHAT HAS ALREADY BEEN DONE



- Professional from companies and institutions associated with GTPS
- Extensionists
- Students from Universities and Technical Schools
- Map of Initiatives of Sustainable Livestock
- Track covered by Rally da Pecuária (Livestock Rally)
- Projects using GIPS partially or integrally
- Intercorte Circuit

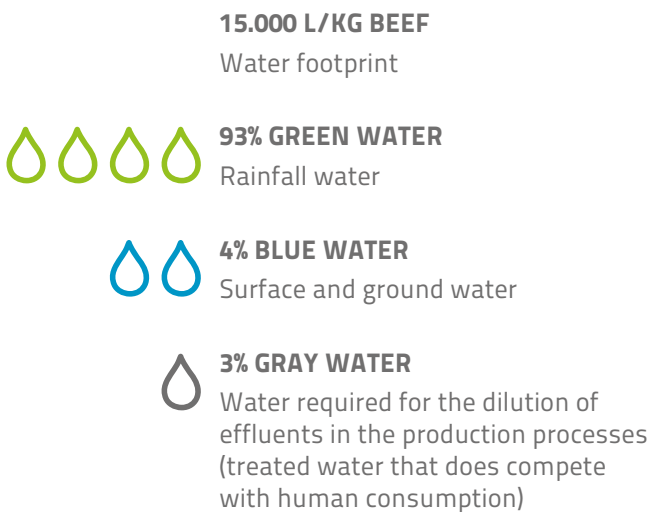
# BRAZILIAN LIVESTOCK PROFILE - 2018

Source: CAGED, Athenagro, IBGE, MAPA  
Elaborated by ABIEC



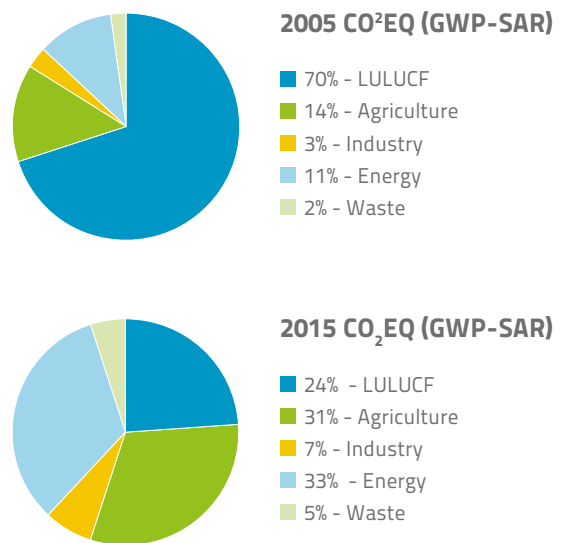
## LIVESTOCK WATER USE

Source: Embrapa and waterfootprint.org



## GHG EMISSIONS AND LOW CARBON AGRICULTURE

Brazilian GHGs emissions pattern has shifted in the last years. In 2005 emissions from the land use, land use change and forestry (LULUCF) sectors represented 58% of the total emissions in CO<sup>2</sup> equivalent. In 2015, this number shifted to 15% due to deforestation reduction.

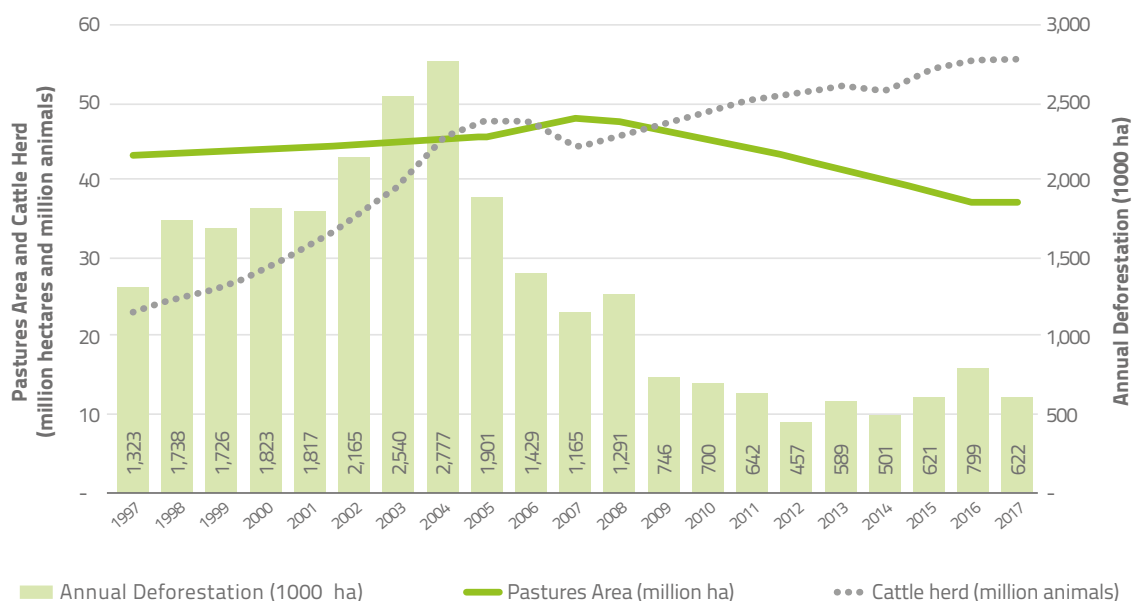


Source: MCTI/2017

▼ **43,92% TOTAL GROSS REDUCTION** ←

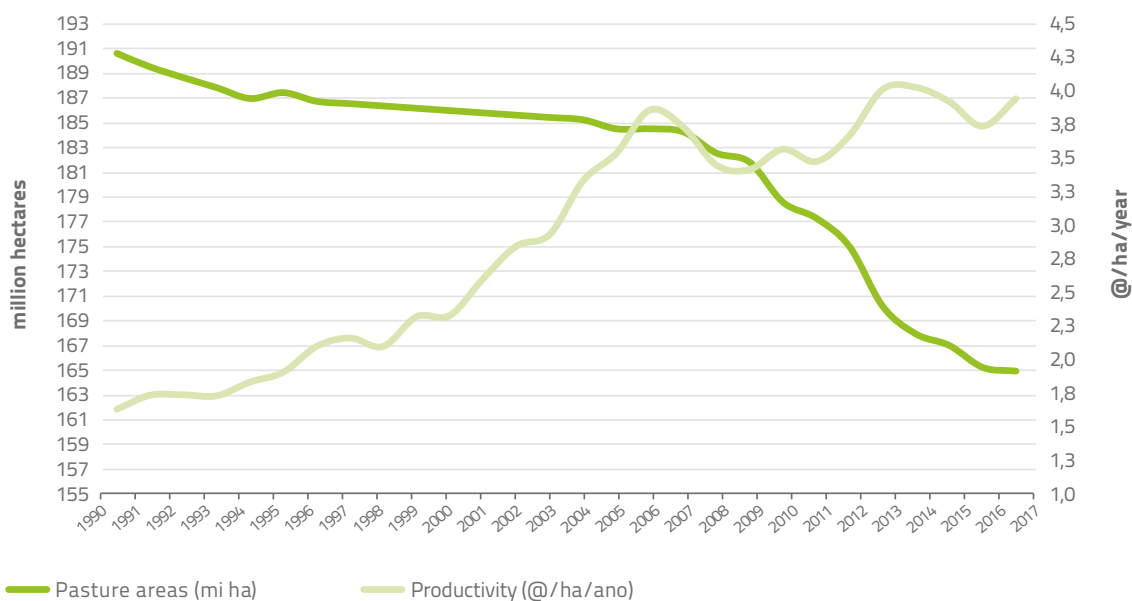
# THE EXPANSION OF LIVESTOCK AND AGRICULTURE DOES NOT RELY ON DEFORESTATION

## Deforestation and cattle herd in the Amazon.



Source: Athenagro, IBGE, Prodes, Lapig, Map Biomass

## Pasture area of Brazil (MI HA) X Productivity (@/HA)



Source: Athenagro, IBGE, Lapig, Prodes, Agroconsult, Agrosatélite, Terraclass, Map Biomass

### KEY CHALLENGES TO PROMOTE PRODUCTIVITY INCREASE AND SUSTAINABLE PRACTICES:

- Educating about livestock intensification and its benefits to the producers and to the environment;
- Improving access to rural credit enabling the investment of less capitalized producers;
- Providing funding to contract technical assistance to implement intensification;
- Supporting producers to comply with environmental protection laws.

**Brazilian biomes and law on protection of native vegetation (Federal Law n° 12.651/2015)**



**ABC PLAN (LOW CARBON AGRICULTURE)**

It is a sector plan for mitigation and adaptation of climate change, created by the Federal Government and managed by the Ministry of Agriculture. There are specifically financial incentives for the 6 following most relevant actions (until 2020):

- Restoration of degraded pastures (15 million hectares).
- Zero tillage (8 million hectares);
- Biological nitrogen fixation (5,5 million hectares);
- Integrated crop-livestock-forestry - iLPF (4 million hectares);
- Planted Forest (3 million hectares);
- Treatment of animal waste (4,4 million m<sup>3</sup>).

**Producers responsibility**

Maintenance of native vegetation in private property

**Amazon:**  
50%-80%

**Cerrado inside Legal Amazon:** 35%

**Others areas:**  
20%

**COP 21: PARIS AGREEMENT 2015**

**Brazil\***

- Was the first developing country to commit of an absolute reduction.
- In its Intended Nationally Determined Contribution - iNDC, Brazil set absolute GHG reduction target of 37% on 2005 values by 2025, and of 43% by 2030.

**To do list**

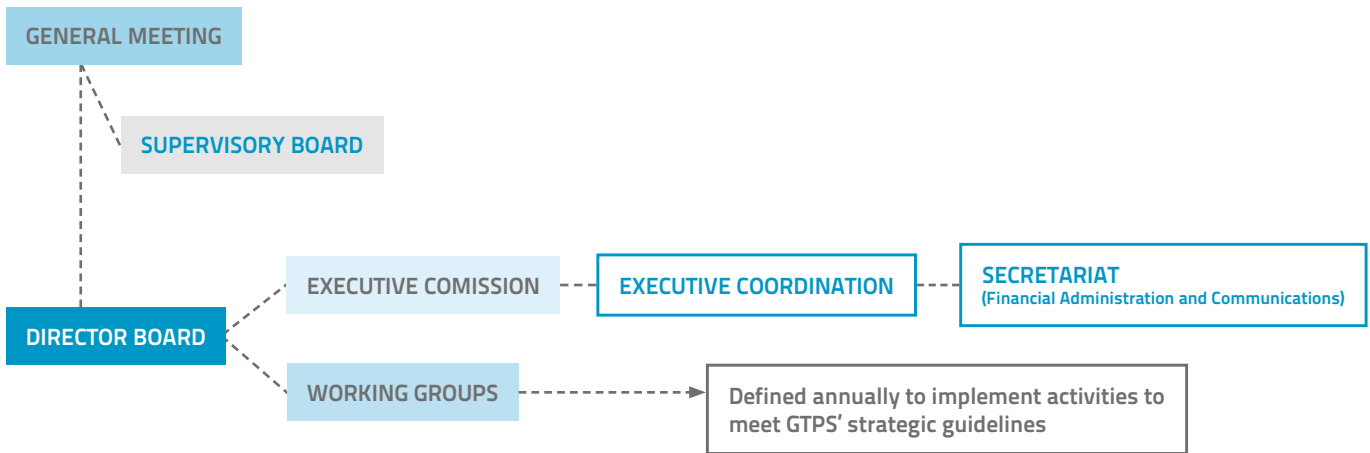
- Strengthening and enforcing the implementation of the Forest Code - Restoration under the Law on Protection of Native Vegetation could lead to a carbon sequestration of up to 4.5bn tonnes in the next 30 years.
- Restoring 15 million ha of pastureland and reforesting 12 million hectares by 2030, for multiple purposes.

**CORPORATE COMMITMENTS**

Private companies have assumed commitments related to socio-environmental responsibility of their supply chains and periodically report the status of their monitoring systems.

\*BRAZIL HAS ALREADY REACHED ITS GOALS

# BRAZILIAN ROUNDTABLE ON SUSTAINABLE LIVESTOCK (GTPS)



## REPRESENTATIVENESS

There are more almost 80 members who represent all Brazilian bovine livestock value chain.



### PRODUCERS

Farmers from all states of Brazil



### INDUSTRY

73% of slaughter under Federal Inspection  
92% of exports in volume of beef



### INPUTS AND SERVICES

70% of Brazilian Market represented in the roudntable



### FINANCIAL INSTITUTIONS

+US\$ 47 billion rural credit in 2016



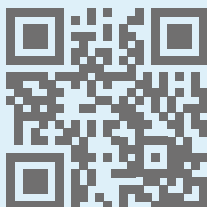
### CIVIL SOCIETY

13 NGO's that act with socio-environmental responsibility in the main commodities chains in the world



### RETAIL AND RESTAURANT

+2 million of people attended every day



## BECOME A MEMBER

Scan the QR Code to access [www.gtps.org.br/faca-parte/](http://www.gtps.org.br/faca-parte/)